

**PETITION
TO CREATE A
COMMUNITY FACILITIES DISTRICT**

Board of Trustees
San Jacinto Unified School District
2045 South San Jacinto Avenue
San Jacinto, California

Members of the Board of Trustees:

This is a petition to create a community facilities district, and a waiver with respect to certain procedural matters, under the Mello-Roos Community Facilities Act of 1982 (the "Act"), and the undersigned hereby states as follows:

1. Landowner; Property. This Petition is submitted by D.R. Horton Los Angeles Holding Company, Inc., a California corporation (the "Landowner"), as the legal owner of the real property described in Exhibit A attached hereto and made a part hereof (the "Property"). All of the Property is proposed to be included within the boundaries of the Community Facilities District (as defined below). The Property consists of approximately 13.23 acres and comprises 100% of the area of land proposed to be included within the Community Facilities District and not proposed to be exempt from the special tax.

2. Proceedings Requested. The Landowner hereby requests that the Board of Trustees (the "Board of Trustees") of the San Jacinto Unified School District (the "School District") institute proceedings pursuant to the Act to establish a community facilities district to be named "Community Facilities District No. 2020-1 of the San Jacinto Unified School District" (the "Community Facilities District"), to levy special taxes in the Community Facilities District and to authorize special tax bonds for the Community Facilities District in an amount of not to exceed \$2,500,000.

3. Boundaries of Community Facilities District. The boundaries of the territory that is proposed for inclusion in the Community Facilities District are described in Exhibit B attached hereto and made a part hereof.

4. Types of Facilities. The types of facilities to be financed by the Community Facilities District are described in Exhibit C attached hereto and made a part hereof.

5. Elections. The Landowner hereby requests that the special elections to be held under the Act to authorize the special taxes for the Community Facilities District, to authorize the issuance of the bonds for the Community Facilities District and to establish an appropriations limit for the Community Facilities District be consolidated into a single election and that the election be conducted by the School District and its officials using mailed or hand-delivered ballots and that such ballots be opened and canvassed and the results certified at the same meeting of the Board of Trustees as the public hearings on the Community Facilities District under the Act, or as soon thereafter as possible.

6. Waiver. To expedite the completion of the proceedings for the Community Facilities District, the Landowner hereby waives all notices of hearings (other than published notices required under the Act) and all notices of election, all applicable waiting periods under the Act for the election, all ballot analysis and arguments for the election and all requirements as to the form of the ballot.

7. Deposit. The Landowner has previously submitted (a) a check in the amount of \$30,000.00, which constitutes the deposit required by the School District to be used to compensate the Board of Trustees and the School District for all costs incurred in conducting proceedings to create the Community Facilities District, and (b) a duly executed Deposit and Reimbursement Agreement, dated as of September 1, 2020 (the "Deposit Agreement"), by and between the School District and the Landowner, relating to the Community Facilities District.

8. Representations and Warranties. The Landowner hereby represents and warrants to the School District that (a) the Landowner is, as of the date of this Petition, the legal owner of the fee interest in the Property and that no other person or entity is the legal owner of all or any portion of the fee interest in any of the Property, (b) the Landowner has the power and authority to execute and deliver the Deposit Agreement and this Petition, and has taken all action necessary to cause the Deposit Agreement and this Petition to be executed and delivered on its behalf, and (c) the Deposit Agreement and this Petition have been duly and validly executed and delivered on behalf of the Landowner.

9. Mailing Address. The address of the Landowner for receiving notices and ballots is: D.R. Horton Los Angeles Holding Company, Inc., 2280 Wardlow Circle, Suite 100, Corona, California 92880, Attention: Barbara M. Murakami, Vice President.

This Petition is dated as of September 8, 2020.

**D.R. HORTON LOS ANGELES HOLDING
COMPANY, INC.,** a California corporation


By: 
Barbara M. Murakami,
Vice President

EXHIBIT A

DESCRIPTION OF PROPERTY

The Property consists of the following Riverside County Assessor Parcel Numbers:

433-510-005 through 433-510-025, inclusive
433-511-001 through 433-511-007, inclusive
433-512-001 through 433-512-008, inclusive
433-520-001 through 433-520-006, inclusive
433-521-001 through 433-521-010, inclusive
433-522-001 through 433-522-005, inclusive
433-523-001
433-523-002
433-524-001
433-524-002
433-525-001
433-525-002
433-526-001
433-526-004 through 433-526-006, inclusive

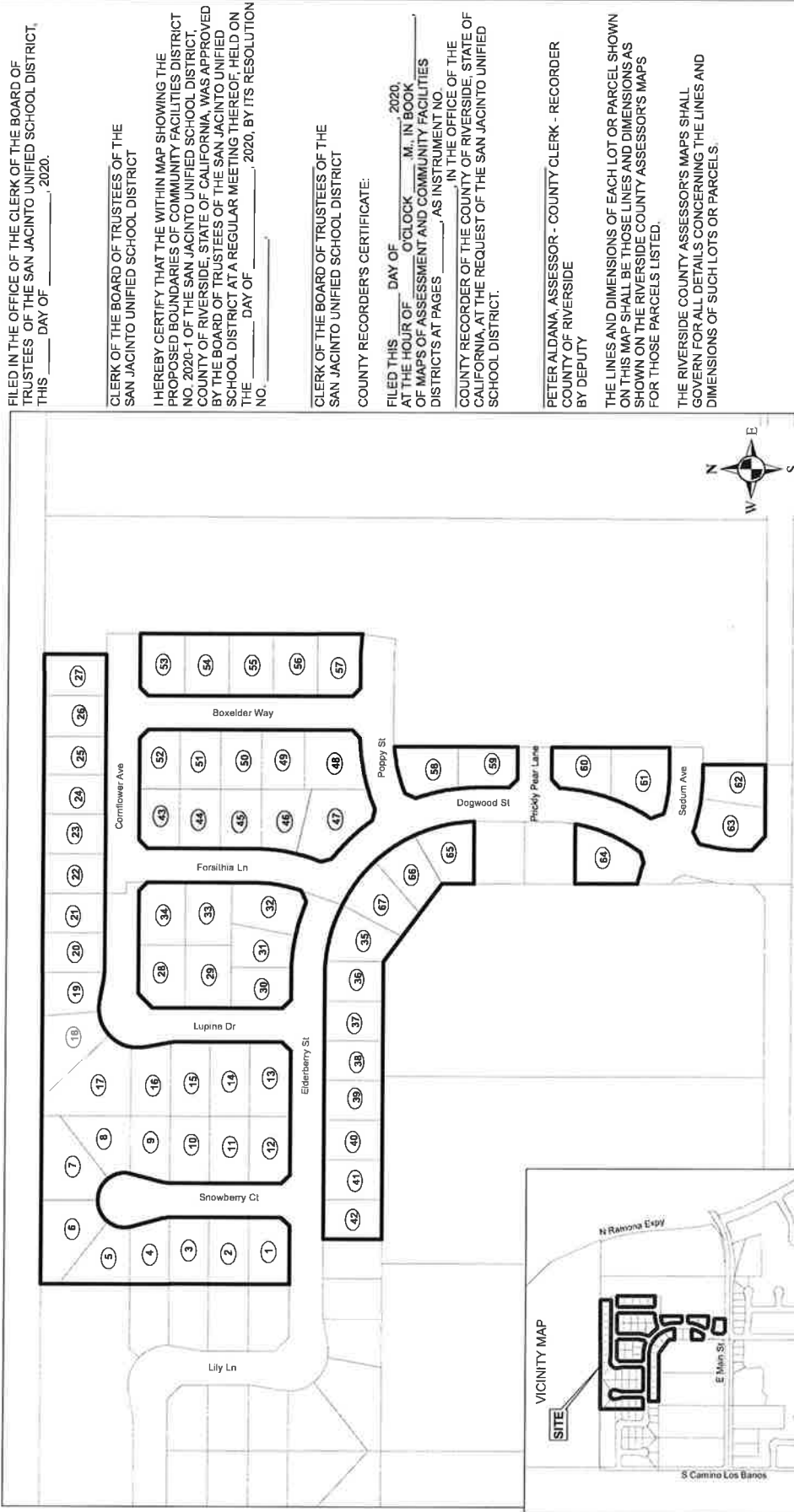
EXHIBIT B

BOUNDARIES OF COMMUNITY FACILITIES DISTRICT

The boundaries of the territory which is proposed for inclusion in the Community Facilities District are depicted in the attached map. Such territory consists of the following Riverside County Assessor Parcel Numbers:

433-510-005 through 433-510-025, inclusive
433-511-001 through 433-511-007, inclusive
433-512-001 through 433-512-008, inclusive
433-520-001 through 433-520-006, inclusive
433-521-001 through 433-521-010, inclusive
433-522-001 through 433-522-005, inclusive
433-523-001
433-523-002
433-524-001
433-524-002
433-525-001
433-525-002
433-526-001
433-526-004 through 433-526-006, inclusive

**PROPOSED BOUNDARIES OF COMMUNITY FACILITIES DISTRICT NO. 2020-1
OF THE SAN JACINTO UNIFIED SCHOOL DISTRICT**
COUNTY OF RIVERSIDE
STATE OF CALIFORNIA



FILED IN THE OFFICE OF THE CLERK OF THE BOARD OF TRUSTEES OF THE SAN JACINTO UNIFIED SCHOOL DISTRICT, THIS ____ DAY OF _____, 2020.

CLERK OF THE BOARD OF TRUSTEES OF THE SAN JACINTO UNIFIED SCHOOL DISTRICT

I HEREBY CERTIFY THAT THE WITHIN MAP SHOWING THE PROPOSED BOUNDARIES OF COMMUNITY FACILITIES DISTRICT NO. 2020-1 OF THE SAN JACINTO UNIFIED SCHOOL DISTRICT, COUNTY OF RIVERSIDE, STATE OF CALIFORNIA, WAS APPROVED BY THE BOARD OF TRUSTEES OF THE SAN JACINTO UNIFIED SCHOOL DISTRICT AT A REGULAR MEETING THEREOF, HELD ON THE ____ DAY OF _____, 2020, BY ITS RESOLUTION NO. ____.

CLERK OF THE BOARD OF TRUSTEES OF THE SAN JACINTO UNIFIED SCHOOL DISTRICT
COUNTY RECORDER'S CERTIFICATE:

FILED THIS ____ DAY OF _____, 2020, AT THE HOUR OF ____ O'CLOCK ____ M. IN BOOK ____ OF MAPS OF ASSESSMENT AND COMMUNITY FACILITIES DISTRICTS AT PAGES ____ AS INSTRUMENT NO. ____.

COUNTY RECORDER OF THE COUNTY OF RIVERSIDE, STATE OF CALIFORNIA, AT THE REQUEST OF THE SAN JACINTO UNIFIED SCHOOL DISTRICT.

PETER ALDANA, ASSESSOR - COUNTY CLERK - RECORDER
COUNTY OF RIVERSIDE
BY DEPUTY

THE LINES AND DIMENSIONS OF EACH LOT OR PARCEL SHOWN ON THIS MAP SHALL BE THOSE LINES AND DIMENSIONS AS SHOWN ON THE RIVERSIDE COUNTY ASSESSOR'S MAPS FOR THOSE PARCELS LISTED.

THE RIVERSIDE COUNTY ASSESSOR'S MAPS SHALL GOVERN FOR ALL DETAILS CONCERNING THE LINES AND DIMENSIONS OF SUCH LOTS OR PARCELS.

Legend

- BOUNDARIES OF COMMUNITY FACILITIES DISTRICT NO. 2020-1 OF THE SAN JACINTO UNIFIED SCHOOL DISTRICT
- ASSESSOR PARCEL LINES

**PROPOSED BOUNDARIES OF COMMUNITY FACILITIES DISTRICT NO. 2020-1
OF THE SAN JACINTO UNIFIED SCHOOL DISTRICT**
COUNTY OF RIVERSIDE
STATE OF CALIFORNIA

MAP REFERENCE NUMBER	ASSESSOR'S PARCEL NUMBER	MAP REFERENCE NUMBER	ASSESSOR'S PARCEL NUMBER	MAP REFERENCE NUMBER	ASSESSOR'S PARCEL NUMBER	MAP REFERENCE NUMBER	ASSESSOR'S PARCEL NUMBER
1	433-510-005	21	433-510-025	41	433-512-007	61	433-524-002
2	433-510-006	22	433-520-001	42	433-512-008	62	433-525-001
3	433-510-007	23	433-520-002	43	433-521-001	63	433-525-002
4	433-510-008	24	433-520-003	44	433-521-002	64	433-526-001
5	433-510-009	25	433-520-004	45	433-521-003	65	433-526-004
6	433-510-010	26	433-520-005	46	433-521-004	66	433-526-005
7	433-510-011	27	433-520-006	47	433-521-005	67	433-526-006
8	433-510-012	28	433-511-001	48	433-521-006		
9	433-510-013	29	433-511-002	49	433-521-007		
10	433-510-014	30	433-511-003	50	433-521-008		
11	433-510-015	31	433-511-004	51	433-521-009		
12	433-510-016	32	433-511-005	52	433-521-010		
13	433-510-017	33	433-511-006	53	433-522-001		
14	433-510-018	34	433-511-007	54	433-522-002		
15	433-510-019	35	433-512-001	55	433-522-003		
16	433-510-020	36	433-512-002	56	433-522-004		
17	433-510-021	37	433-512-003	57	433-522-005		
18	433-510-022	38	433-512-004	58	433-523-001		
19	433-510-023	39	433-512-005	59	433-523-002		
20	433-510-024	40	433-512-006	60	433-524-001		

EXHIBIT C

TYPES OF FACILITIES

The types of facilities to be financed by the Community Facilities District are school facilities, water distribution, treatment and reservoir facilities and sewer collection, conveyance, treatment and disposal facilities, and land, rights-of-way and easements necessary for any of such facilities.